

◆ **Technical Data:**

Model: PR-E-AQ-VI(V2)

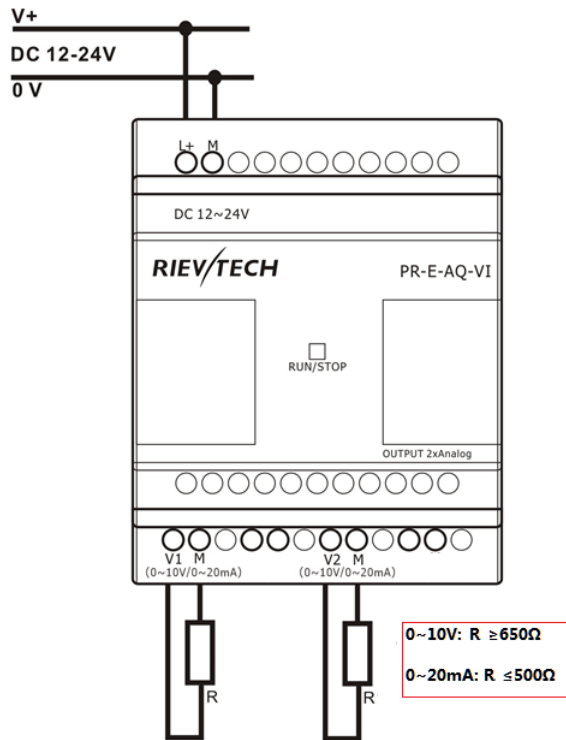
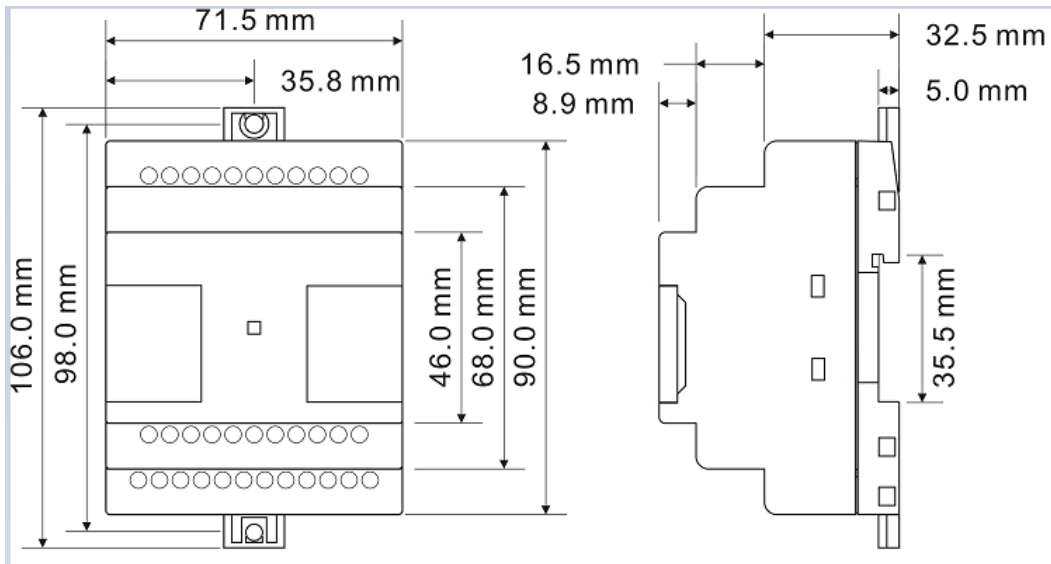


1.16 pcs extensions can be applied to the PR-18 or PR-24 CPU
 2.Connection cable length can be customized(Max. 30 Meters for the distance between the end extension and CPU)

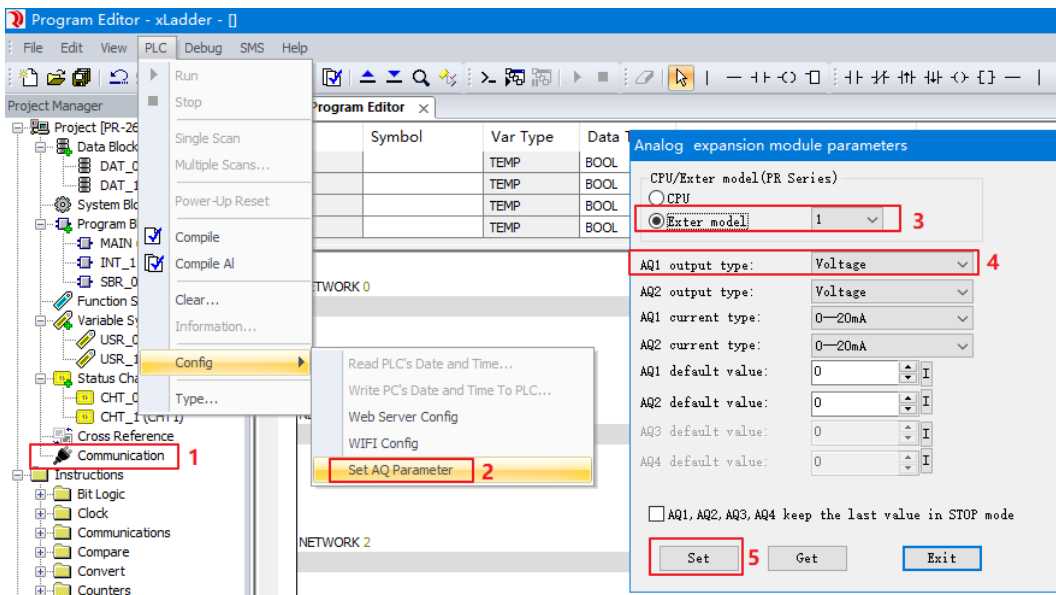
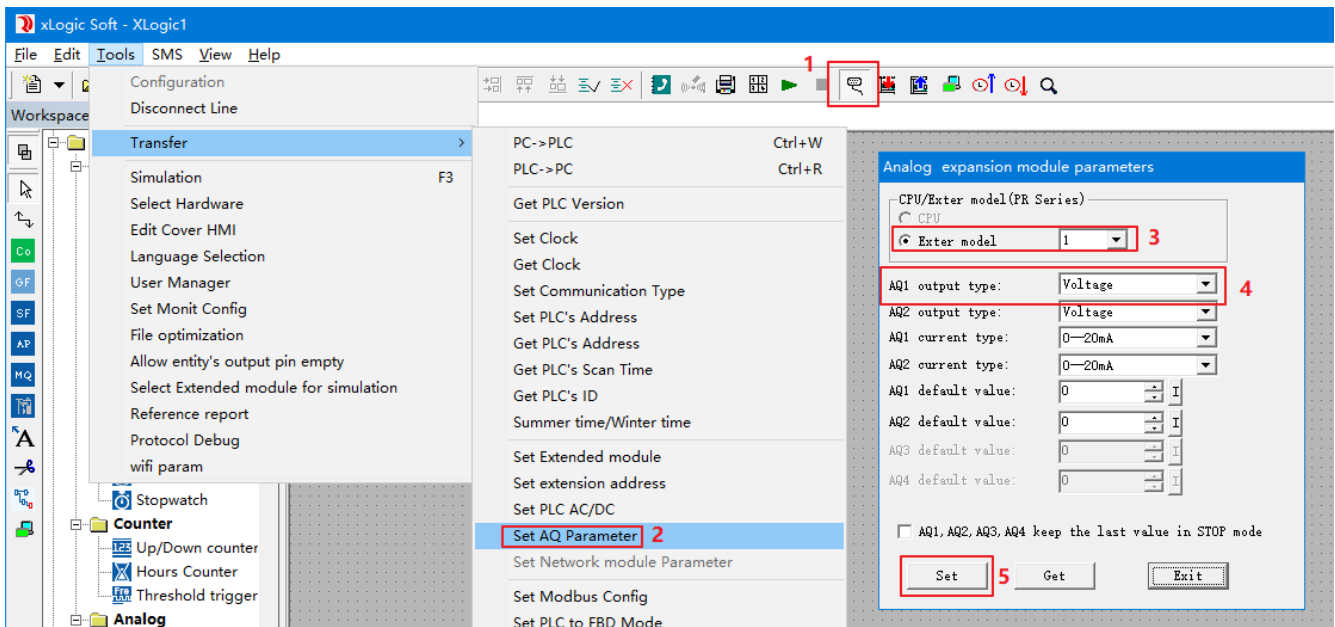
Technical Index

Power supply:	
Nominal voltage	DC 12-24V
Operating limits	DC 10.8-28.8V
Immunity from micro power cuts	Typ.5 ms
Max. Startup current	Max. 0.25A
Max. absorbed power	1.8W
Protection against polarity inversions	Yes
Input parameters:	
Input No	None
Output parameters:	
Output No	2(AQ1-AQ2)
Output signal	DC 0...10V/ 0..20mA (Switch on program software)
Internal value and signal relationship	AQ*1(0..1000)= V1(0...10V)=I1(0...20mA) AQ*2(0..1000)= V2(0...10V)=I2(0...20mA) *= Extension Adr.
Resolution	0.01V or 0.02mA
Accuracy at 25 °C	0.02V or 0.05mA
Other parameters:	
Mounting	On 35-mm DIN rail, 4 WM wide, or wall mounting
Operation temp.	-20°C-55°C
Storage temp.	-40°C-70°C
Weight	Approx.300g
Certificate	CE

Installation Dimensions & Wiring Diagram



Set the output signal (voltage/current) of AQ1,AQ2 on the programming software, as shown below:



It is recommended to use a programming cable (USB Cable, RS232 Cable) to set the AQ mode. The Ethernet channel has requirements for the firmware version of the CPU PLC.