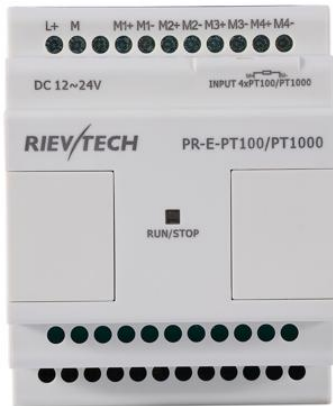


◆ **Technical Data:**

**Model: PR-E-PT100/PT1000**



1. 16 pcs extensions can be applied to the PLC CPU.
2. Connection cable length can be customized (Max. 30 Meters for the distance between the end extension and CPU).

**Technical Index**

<b>Power supply:</b>	
Nominal voltage	DC 12-24V
Operating limits	DC 10.8-28.8V
Immunity from micro power cuts	Typ.5 ms
Max. Startup current	Max. 0.25A
Max. absorbed power	1 W
Protection against polarity inversions	Yes
<b>Input parameters:</b>	
Input No	4 (AI1 ~AI4)
Digital input	None
Analogue input	4 Channels PT100/PT1000(Switch on program software)
Resolution	0.3°C
Accuracy at 25 °C	Max. ± 1°C
Measuring range	-50°C to +200°C
<b>Output parameters:</b>	
Output No.	None
<b>Other parameters:</b>	
Line length (shielded and twisted)	10 m
Operation temp.	-20°C to 55°C
Storage temp.	-40°C to 70°C
Weight	Apporox.300g

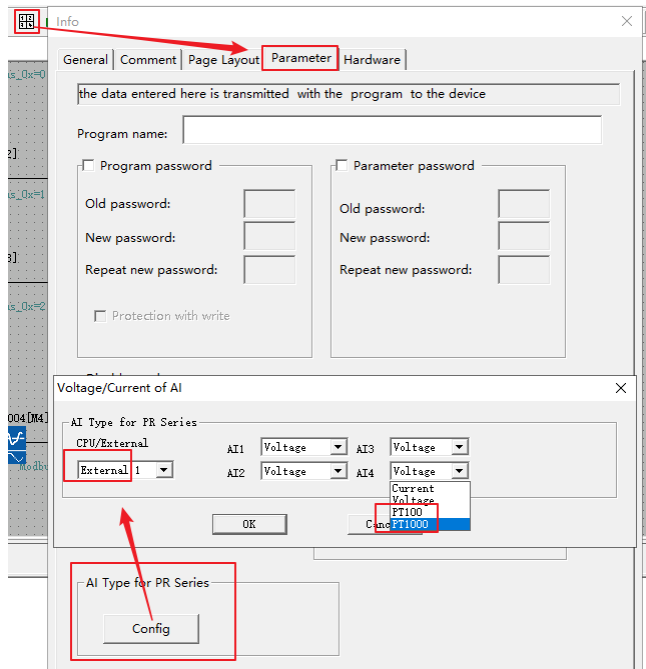
Note:

**PT1000:** Requirements for firmware. PR series CPU (Firmware >=V0.40), PR-N series CPU (Firmware >=V2.03), HVAC series CPU (Firmware >= V0.04).

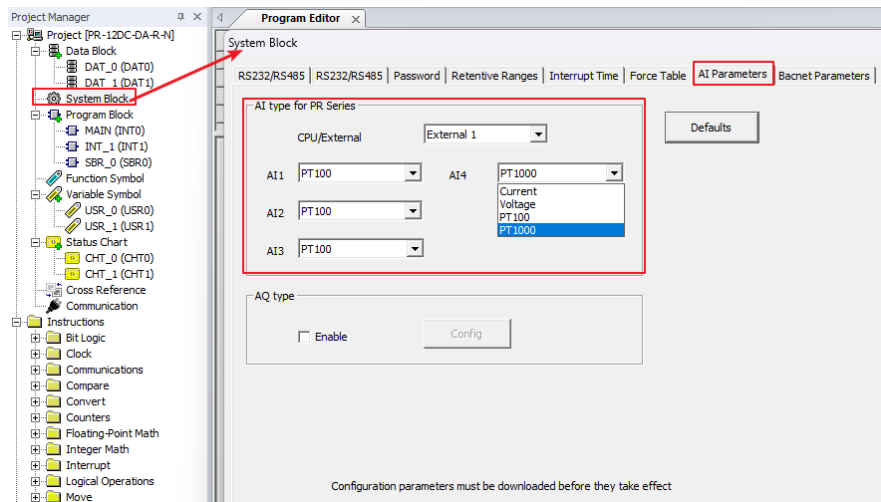
**PT100:** PR series, PR-N series, HVAC series are all supported. If the firmware version of each series of CPU is lower than the new version number required above, it only supports 3-way PT100 (AI1~AI3).

## Set the analog input type

### xLogic



### xLadder



# Installation Dimensions & Wiring Diagram

